

Working for you...  
AND THE STATE OF HAWAII

# SENATOR DONOVAN M. DELA CRUZ

HAWAII STATE SENATE - DISTRICT 22  
Milliani Mauka • Wahiawa • Whitmore Village • Waipio Acres • Wheeler • Poamoho



February 2019

**Chair:**

Committee on Ways and Means

**Member:**

Committee on Education



You can view Senator DeLa Cruz's senate website at [www.capitol.hawaii.gov](http://www.capitol.hawaii.gov).



Subscribe to our E-Newsletter by emailing [delacruz2@capitol.hawaii.gov](mailto:delacruz2@capitol.hawaii.gov).

**David Cho**, Legislative Aide  
(808) 586-6090  
[d.cho@capitol.hawaii.gov](mailto:d.cho@capitol.hawaii.gov)

**Tina Lee**, Legislative Aide  
(808) 586-6090  
[t.deistchman@capitol.hawaii.gov](mailto:t.deistchman@capitol.hawaii.gov)

**Dot Fujinaga**, Office Manager  
(808) 586-6090  
[d.fujinaga@capitol.hawaii.gov](mailto:d.fujinaga@capitol.hawaii.gov)

Hawaii State Senate  
415 S. Beretania St., Rm. 208  
Honolulu, HI 96813  
P: 808-586-6090

Email:  
[sendelacruz@capitol.hawaii.gov](mailto:sendelacruz@capitol.hawaii.gov)

## Highway Improvements Coming to Wahiawa!

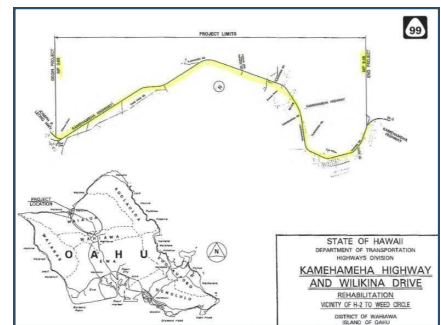
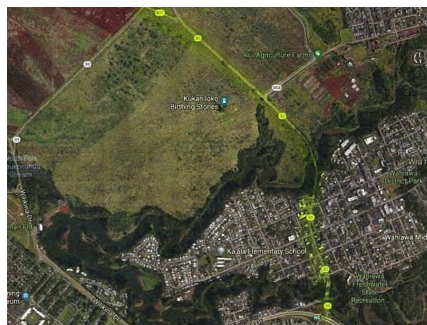
Our community has continued to raise concerns regarding the condition of Kamehameha Highway and the traffic going into Whitmore Village. Hearing your concerns, my office is working with our Department of Transportation to improve Kamehameha Highway in and around Wahiawa and Whitmore Village and review alternative access points into Whitmore Village.

The Department of Transportation has confirmed that it plans to improve and repave Kamehameha Highway between Route 99 which consists of Kamehameha Highway, Kamananui Road, and Wilikina Drive between Weed Circle and the Interstate Route H-2 and the portion of Kamehameha Highway between Kamananui Road and Wilikina Drive.

According to their plans, the current scope of work will include resurfacing and reconstructing weakened pavement areas, upgrades to existing guardrails and installation of new guardrails, construction of bridge endposts, installation of drainage systems, in addition to other general improvements. The Department of Transportation expects to begin the project by late 2020 and the work will take approximately 12 to 18 months. The photos below show the area that will be addressed.

In addition to the improvements, the Department of Transportation is also embarking on a traffic study which will analyze access into Whitmore Village. A draft report will be completed by May 2019 which we will share with the community.

Mahalo to the Department of Transportation for considering the community's concerns to improve Kamehameha Highway. I look forward to working with the community and the department to complete this important project for our district.



You can also report potholes on state or city roads by contacting the **State Pothole Hotline** at (808) 536-7852 or the **City Pothole Report Hotline** at (808) 768-7777.